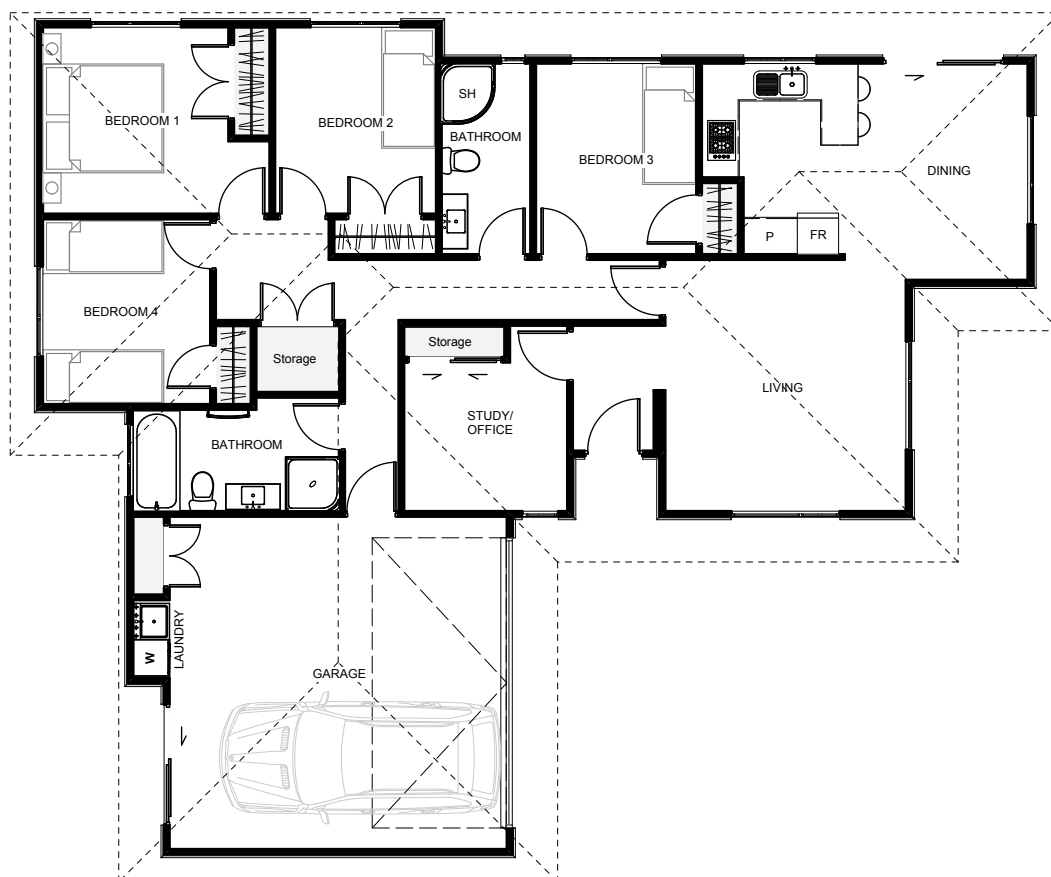


Arlington



The 'Arlington' has a well-defined living layout with the dining & living slightly offset giving both spaces a feel of form & function. If you work from home the study lends itself to a client friendly access point and has a storage cupboard otherwise this room can clearly work as another bedroom! This home also has the bonus of generous wardrobes & great storage space.



Floor Area: 152m²

🛏️ 2 🛏️ 4+ 🚿 2 📏 16.5m 📏 13.8m

Contact us:

Phone: 0800 500 564

Mobile: 027 436 7988

Email: josephbuilders@xtra.co.nz

www.josephbuilders.co.nz

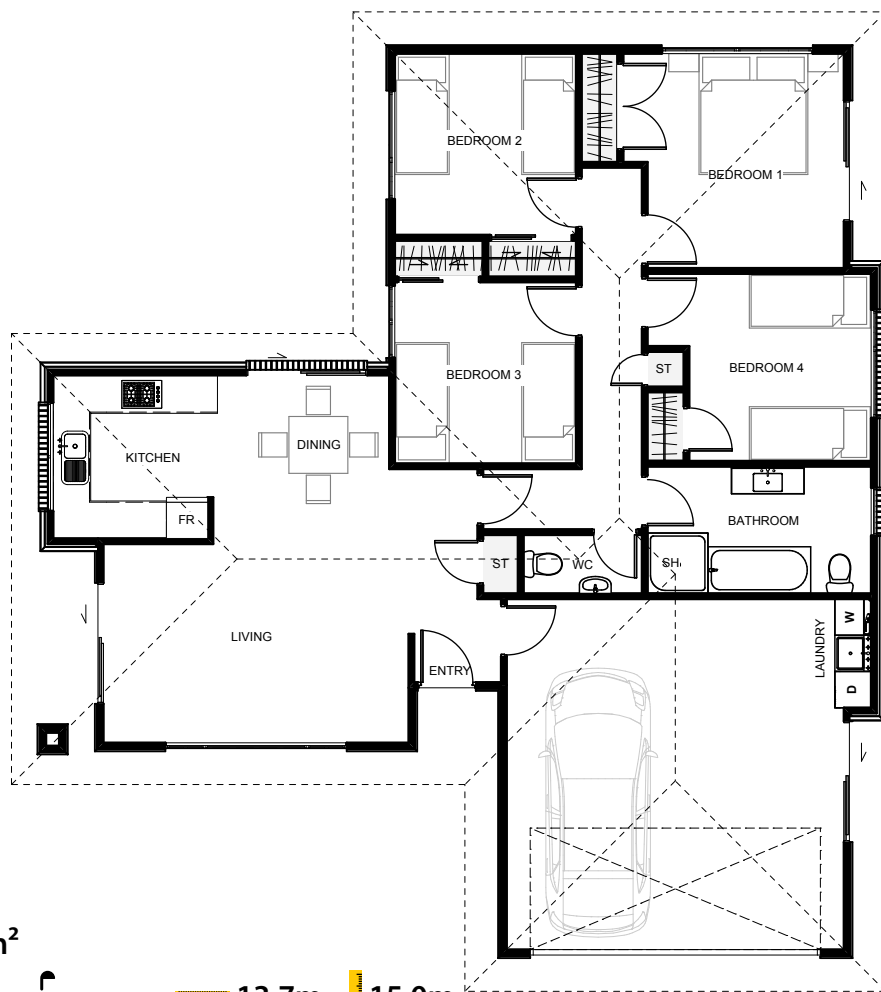


Joseph Builders Ltd
Canterbury



Chandler



The 'Chandler' comes with both a modern appeal & interesting layout while having the form & function of a traditional home. Two cladding types with this home is easily done & with the exterior wall layout, a perfect balance between the two finishes can be achieved. This home also comes with an extra toilet which is useful for guests or when the bathroom is in use.



Floor Area: 142m²

 2  4  1  13.7m  15.0m

Contact us:

Phone: 0800 500 564

Mobile: 027 436 7988

Email: josephbuilders@xtra.co.nz

www.josephbuilders.co.nz

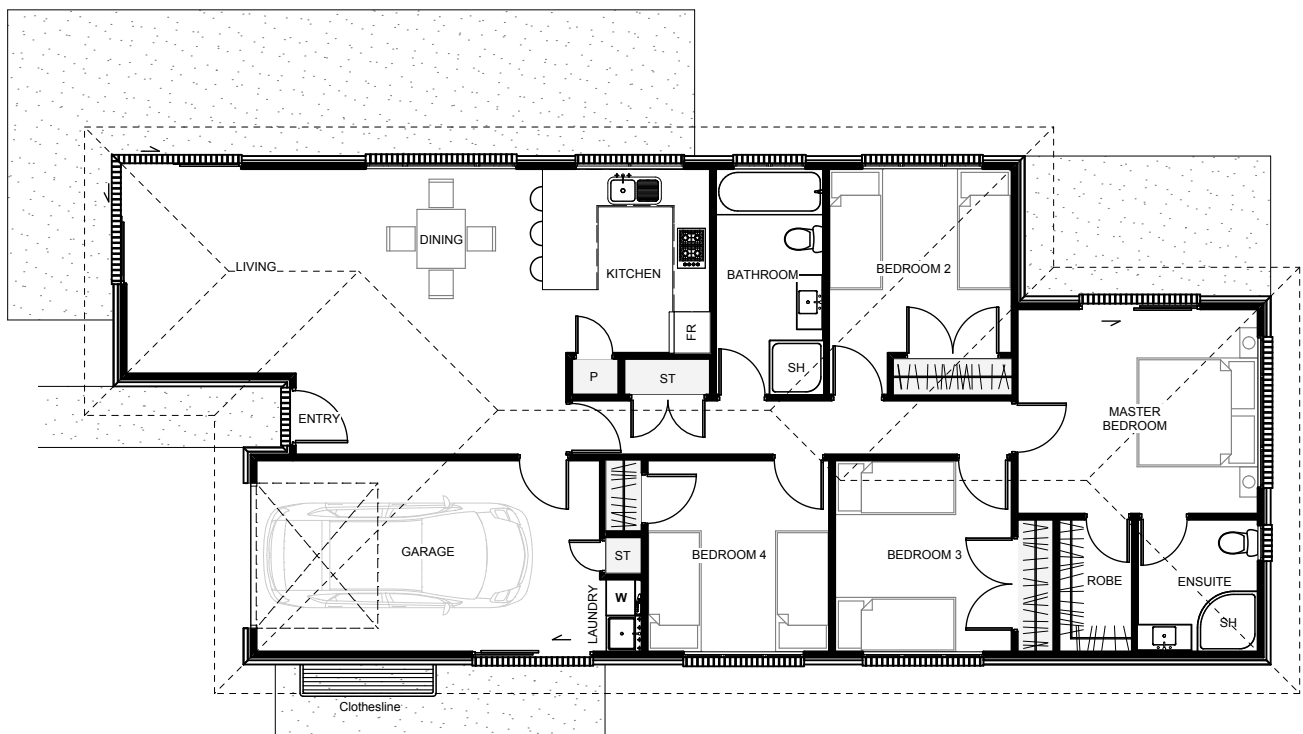


Joseph Builders Ltd
Canterbury


Dayton



The 'Dayton' is an affordable 4 bedroom home with a small footprint suited for multiple sites of all shapes and sizes. This home has an open plan living layout with the advantage of great indoor/ outdoor flow thanks to a modern corner slider. All bedrooms have generous wardrobes including the master bedroom with its very own walk-in wardrobe & ensuite.



Floor Area: 134m²

 1
  4
  2
  18.9m
  8.1m

Contact us:

Phone: 0800 500 564

Mobile: 027 436 7988

Email: josephbuilders@xtra.co.nz

www.josephbuilders.co.nz

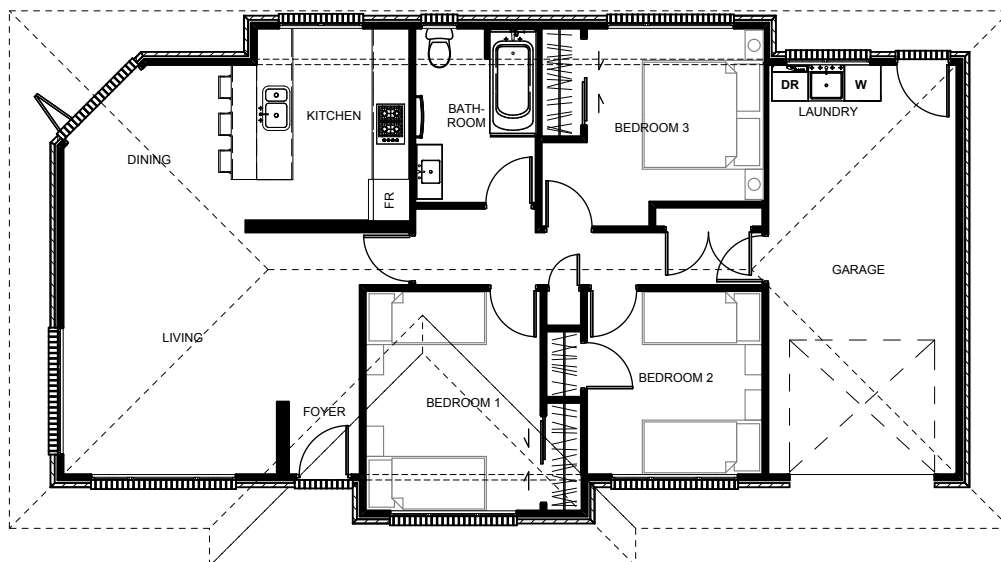


Joseph Builders Ltd
Canterbury

Denton



The 'Denton' is a traditional brick home which is compact & simple in form with all necessities needed for today's living standards. The kitchen, dining & living flow seamlessly throughout the main living space and out onto the outdoor living which gives cover from the cantilevered roof corner. Internal garage access and plenty of storage cupboards makes this a smart build for anyone.



Floor Area: 110m²

1 3 1 15.0m 8.2m

Contact us:

Phone: 0800 500 564

Mobile: 027 436 7988

Email: josephbuilders@xtra.co.nz

www.josephbuilders.co.nz

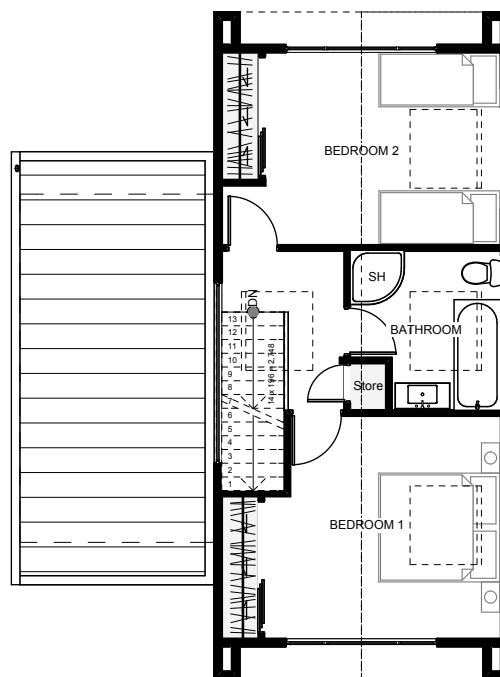
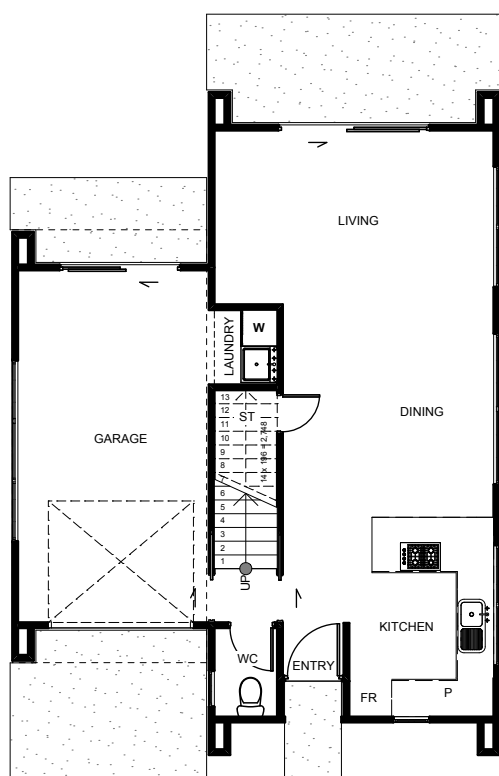


Joseph Builders Ltd
Canterbury

Frenso



The 'Frenso' is a fantastic two bedroom townhouse with a very small footprint allowing this to fit on nearly any section, no matter what size. Open plan living downstairs stretch the length of the home opening out onto the outdoor living area. A toilet can be located on both stories, storage under the stairs and the laundry inset within the garage. Upstairs, each bedroom is positioned at either end with a central bathroom allowing some separation & privacy between.



Floor Area: 132m²

 1
  2
  1
  8.1m
  11.0m

Contact us:

Phone: 0800 500 564

Mobile: 027 436 7988

Email: josephbuilders@xtra.co.nz

www.josephbuilders.co.nz

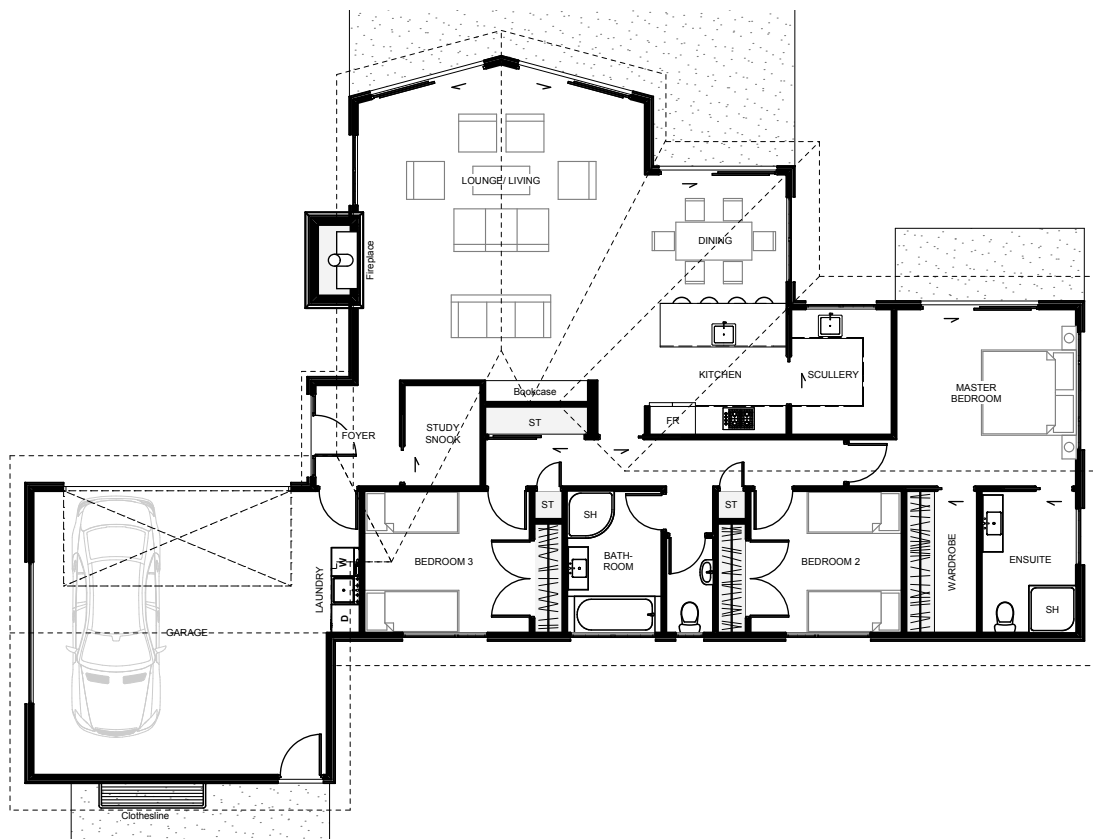


Joseph Builders Ltd
Canterbury

Lancaster



The 'Lancaster' is a timeless style and makes a real statement with its steeply pitched roof and cladding finishes. The main living room sports a high pitched ceiling & makes the space feel large & grand. All north facing walls have large sliding doors which open up the whole home to great outdoor living opportunities. The kitchen includes a scullery so any mess can quickly be shut out of sight with the ingenious wide sliding door. Extras included with this home are the study snook, large storage capacity, an ensuite & walk-in wardrobe.



Floor Area: 190m²

2 3 2 22.2m 15.1m

Contact us:

Phone: 0800 500 564

Mobile: 027 436 7988

Email: josephbuilders@xtra.co.nz

www.josephbuilders.co.nz

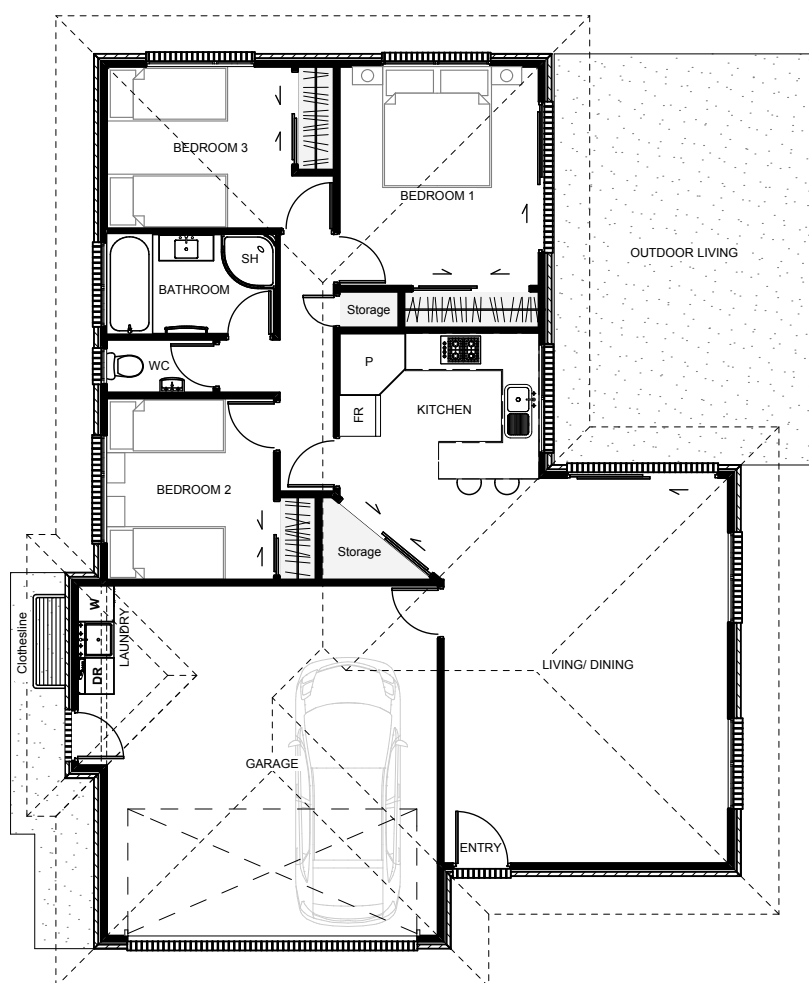


Joseph Builders Ltd
Canterbury

Madison



The 'Madison' is a traditional brick home with a hip & valley roofline making this an affordable option for building. This home's layout is designed for the typical section shape & size with private entertainment, (opposite side from garage), and a great open plan living area.



Floor Area: 127m²

2 3 1 10.9m 14.6m

Contact us:

Phone: 0800 500 564

Mobile: 027 436 7988

Email: josephbuilders@xtra.co.nz

www.josephbuilders.co.nz

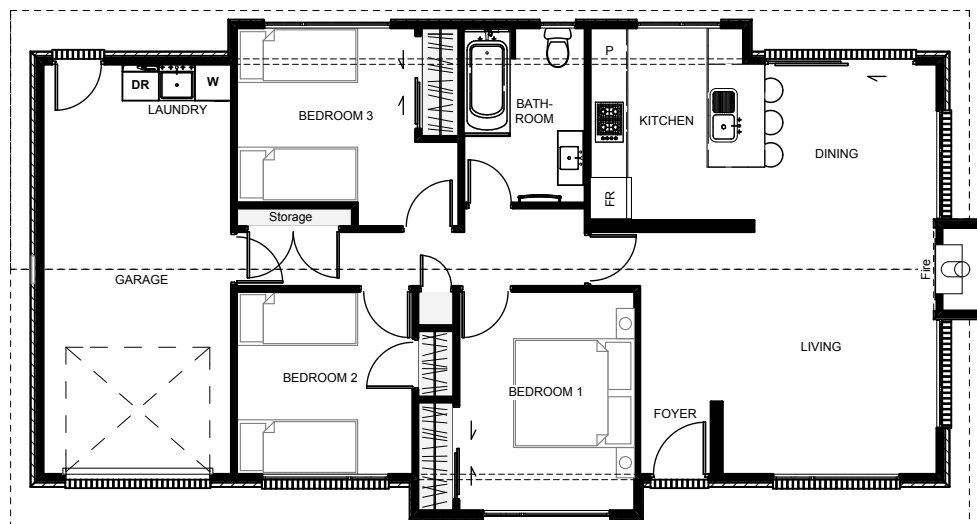


Joseph Builders Ltd
Canterbury

Miramar



The 'Miramar' is a simple yet modern looking home designed to be fun with both the layout & aesthetics. The roof allows for either a pitched or flat ceiling in the dining/ living room with a centred fireplace positioned to disperse heat evenly throughout the main living and down the hallway to the bedrooms. Increasing the garage into a double is an easy upgrade with this home while not disadvantaging any other aspect of the design, layout or internal garage access.



Floor Area: 112m²

 1  3  1  15.7m  8.2m

Contact us:

Phone: 0800 500 564

Mobile: 027 436 7988

Email: josephbuilders@xtra.co.nz

www.josephbuilders.co.nz

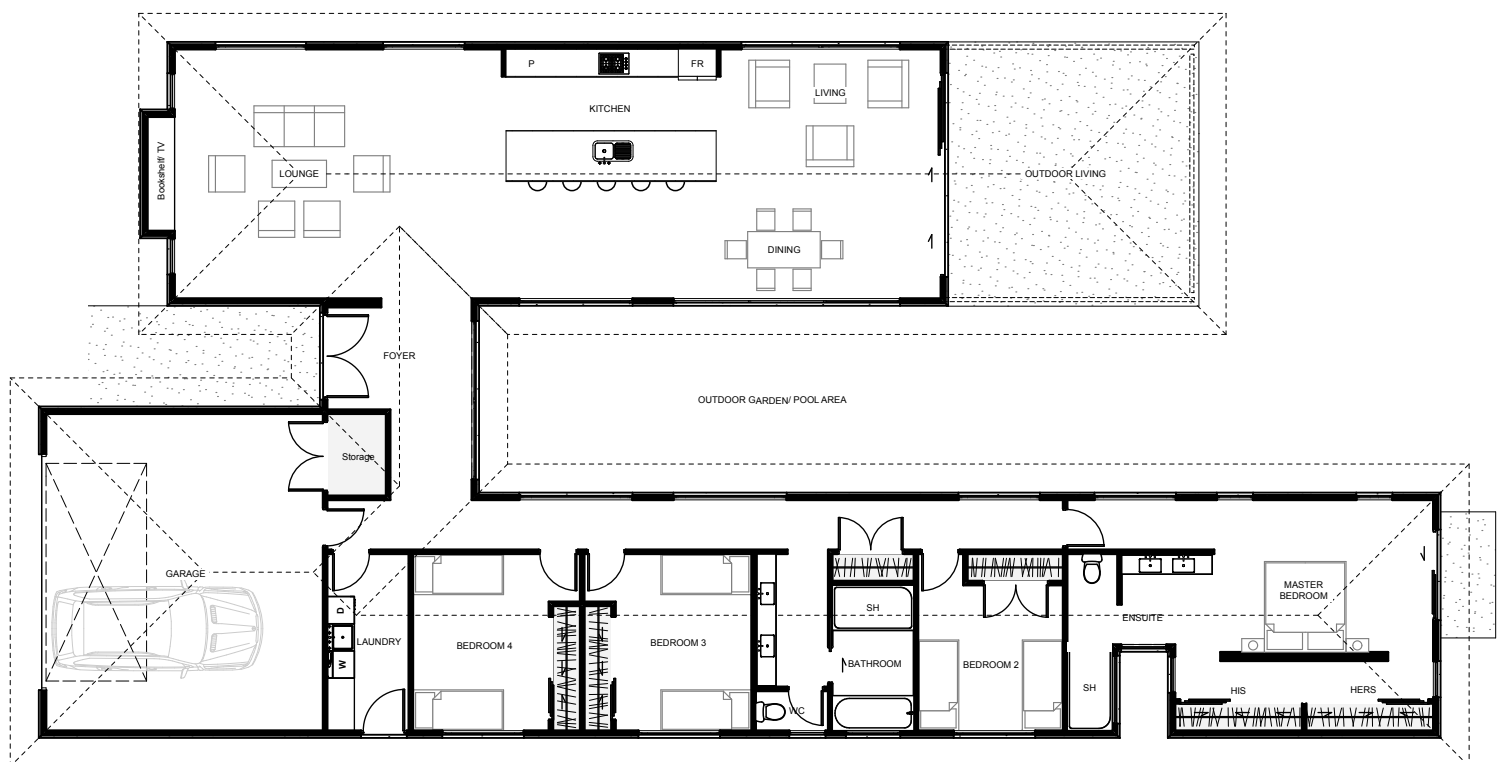


Joseph Builders Ltd
Canterbury

Montana



The 'Montana' is a cleverly designed 4 bedroom 'H' shaped home which separates living from bedrooms into two distinctive wings. An opening between the two wings gives plenty of space to create either a natural garden outlook or a lap pool configuration. The master bedroom is generous in size and flows nicely from the bed, through a reverse wardrobe layout to an open designed ensuite. The main living, large in size, flows seamlessly between living, kitchen, dining & outdoor living, which has great roof cover for enjoyable entertainment no matter what the weather.



Floor Area: 240m²

2
 4
 2
 30.8m
 15.0m

Contact us:

Phone: 0800 500 564

Mobile: 027 436 7988

Email: josephbuilders@xtra.co.nz

www.josephbuilders.co.nz

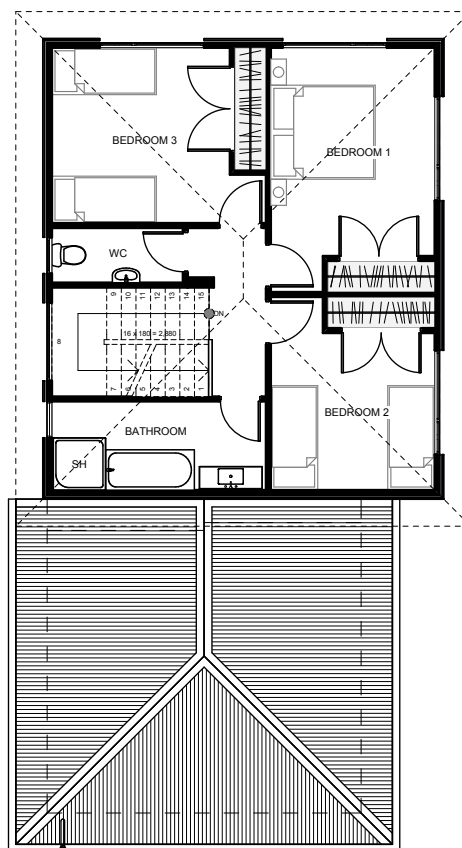
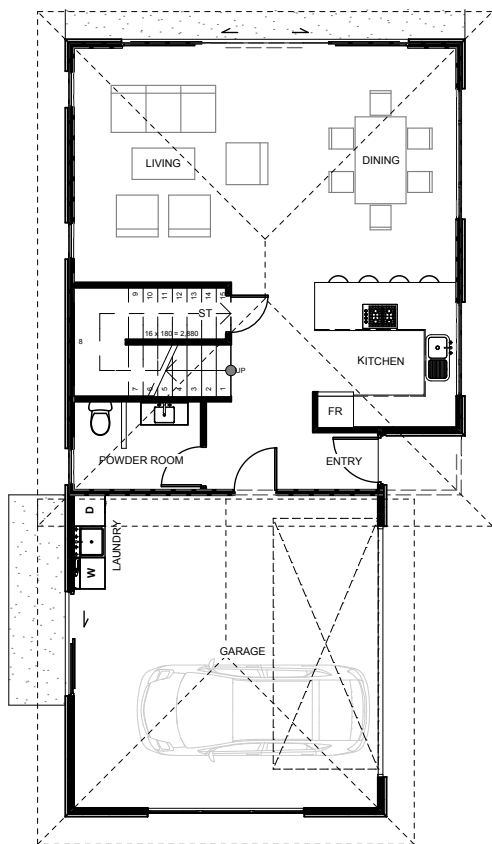


Joseph Builders Ltd
Canterbury

Orlando



The 'Orlando', a great New Zealand two story home with large opening living doors gives this home the perfect alfresco living for those nice summer days. Inside, the dining, living & kitchen are open plan with internal garage access, laundry & a generously sized powder room for guests and those downstairs. Upstairs, 3 bedrooms with great views & large double wardrobes, a bathroom & a separate toilet make this a home fit for any New Zealand family.



Floor Area: 172m²

2 3 1 7.5m 14.7m

Contact us:

Phone: 0800 500 564

Mobile: 027 436 7988

Email: josephbuilders@xtra.co.nz

www.josephbuilders.co.nz

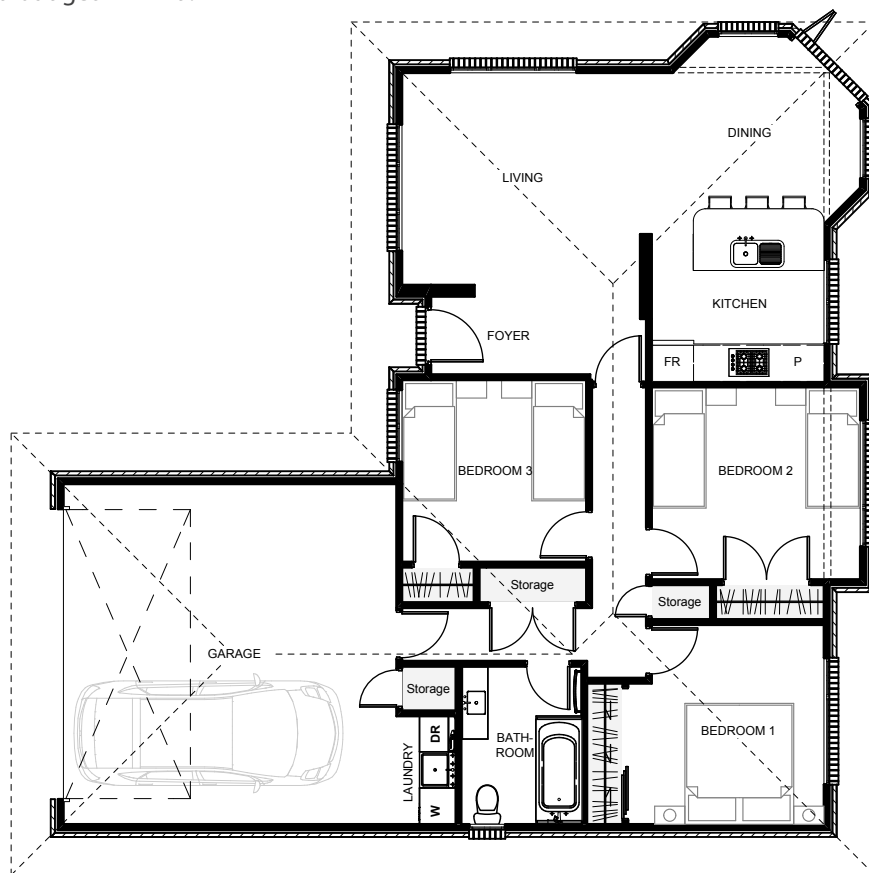


Joseph Builders Ltd
Canterbury

Torrance



The 'Torrance' is a traditional brick home designed for a cost effective build with all necessities suited to today's living. Cladding changes can easily be changed from brick to weatherboard or any other cladding type to achieve your desired look. Double garaging with internal access, plenty of storage & great indoor/ outdoor flow make this a smart choice for anyone looking to build with a budget in mind.



Floor Area: 127m²

2 3 1 13.4m 13.2m

Contact us:

Phone: 0800 500 564

Mobile: 027 436 7988

Email: josephbuilders@xtra.co.nz

www.josephbuilders.co.nz



Joseph Builders Ltd
Canterbury