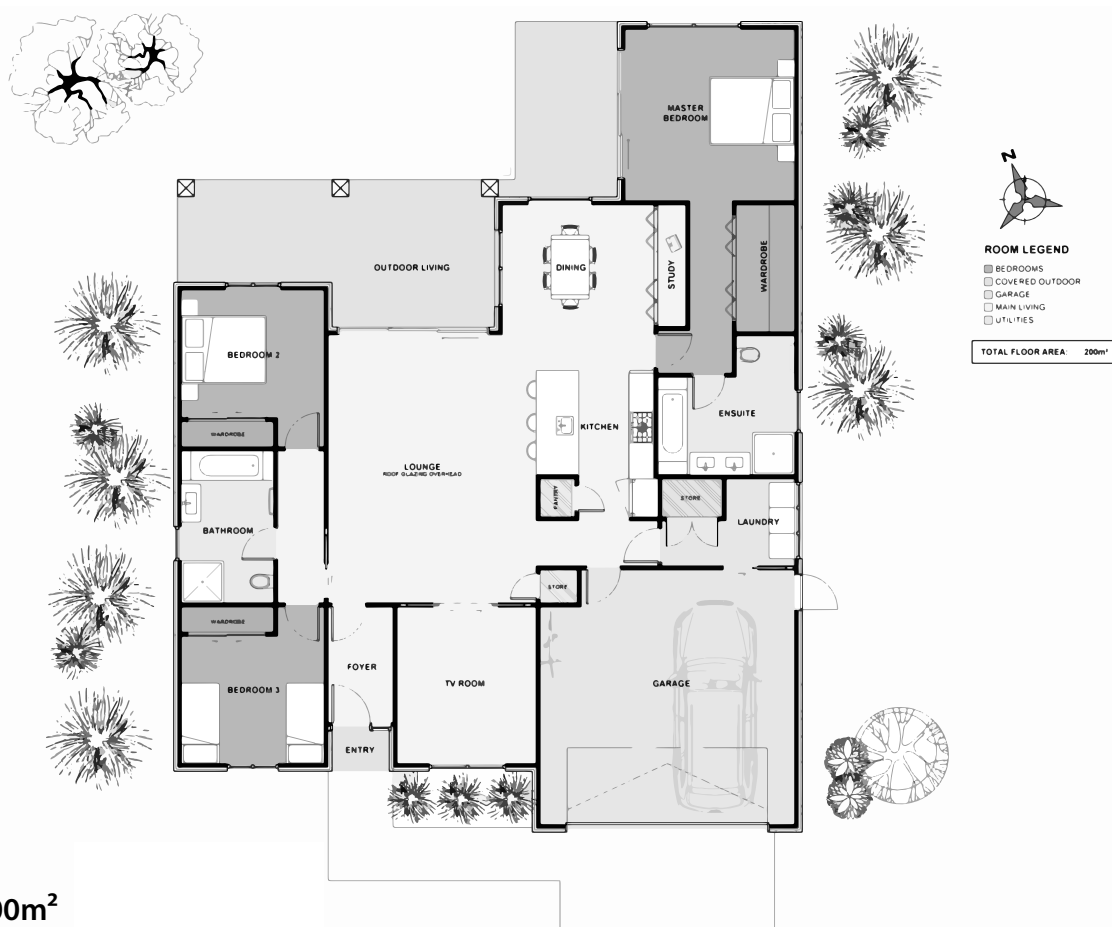


# Albury



The 'Albury' is a modern home with a small footprint. The bedrooms are very separate giving everyone their own privacy and space. The main living is open plan with a separate TV/ Theatre room and a study which can be closed when not in use. Outdoor entertainment flows from the living room with significant roof cover making entertaining always possible. This home can be finished in numerous cladding to give your desired look.



Floor Area: 200m<sup>2</sup>

2 3 2 14.6m 18.9m

Contact us:

Phone: 0800 500 564

Mobile: 027 436 7988

Email: [josephbuilders@xtra.co.nz](mailto:josephbuilders@xtra.co.nz)

[www.josephbuilders.co.nz](http://www.josephbuilders.co.nz)



**Joseph Builders Ltd**  
*Canterbury*